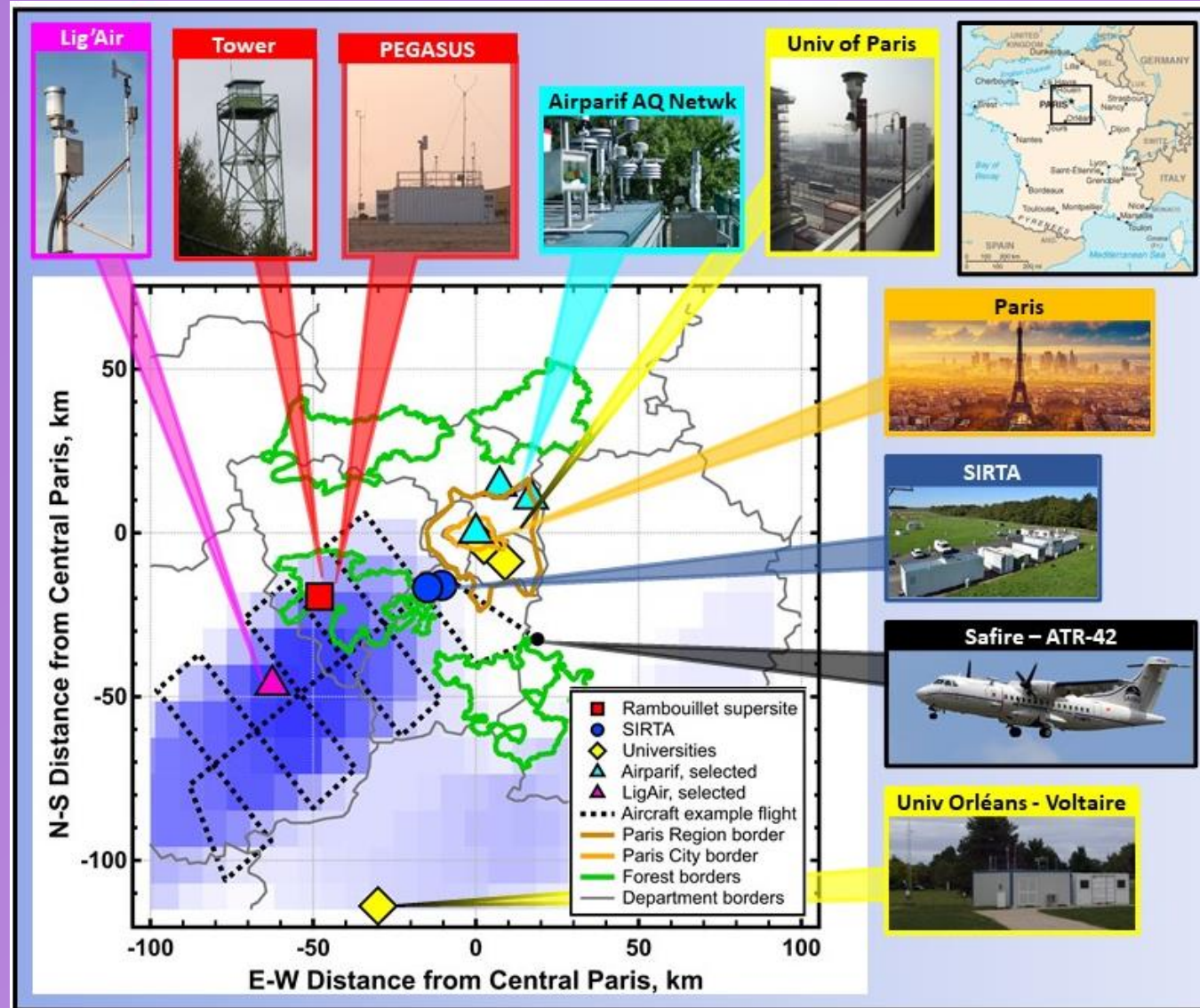


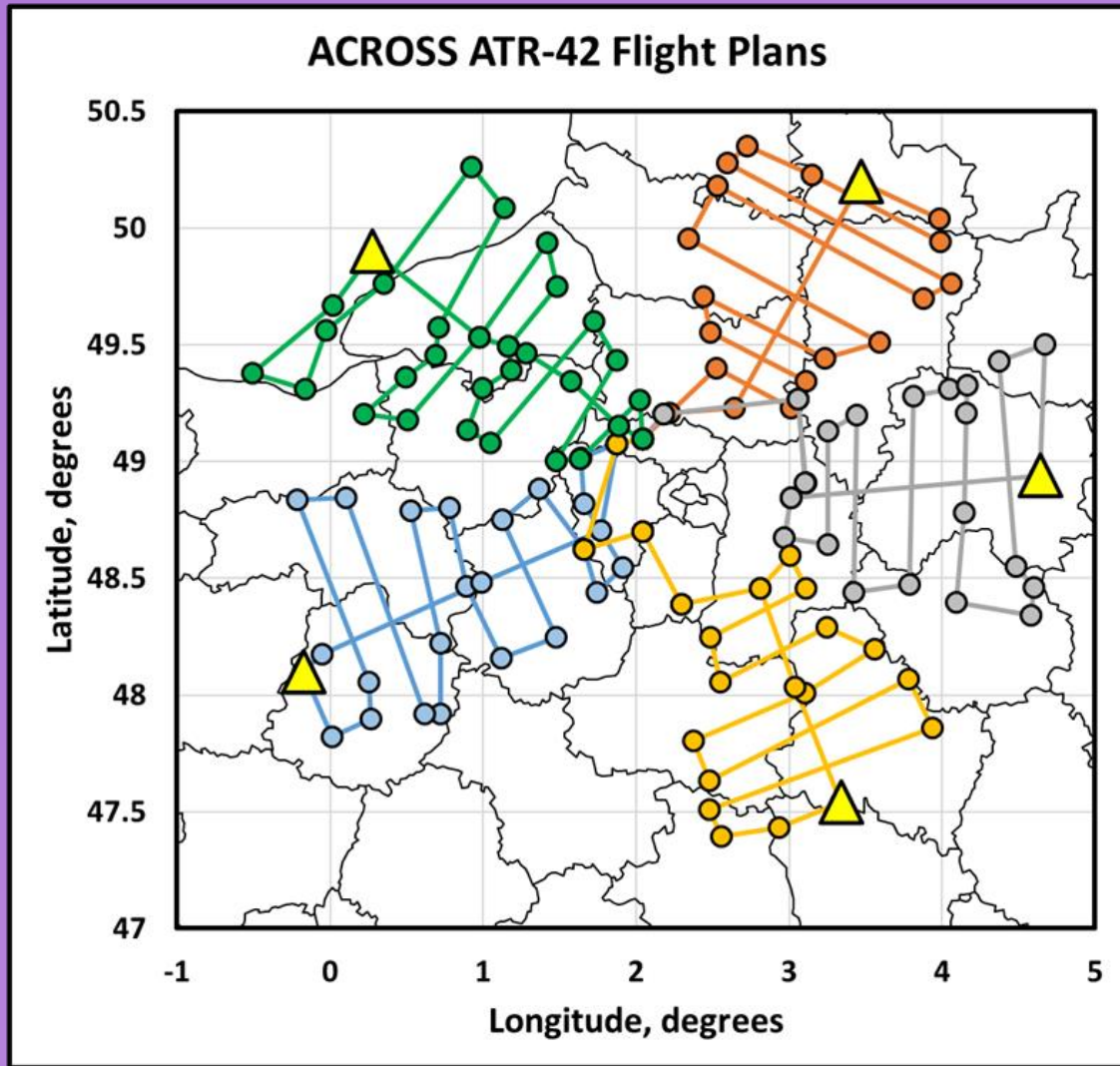
# ACROSS Configuration and Preliminary Observations

**Christopher Cantrell and the ACROSS Team**

# ACROSS Ground Operations

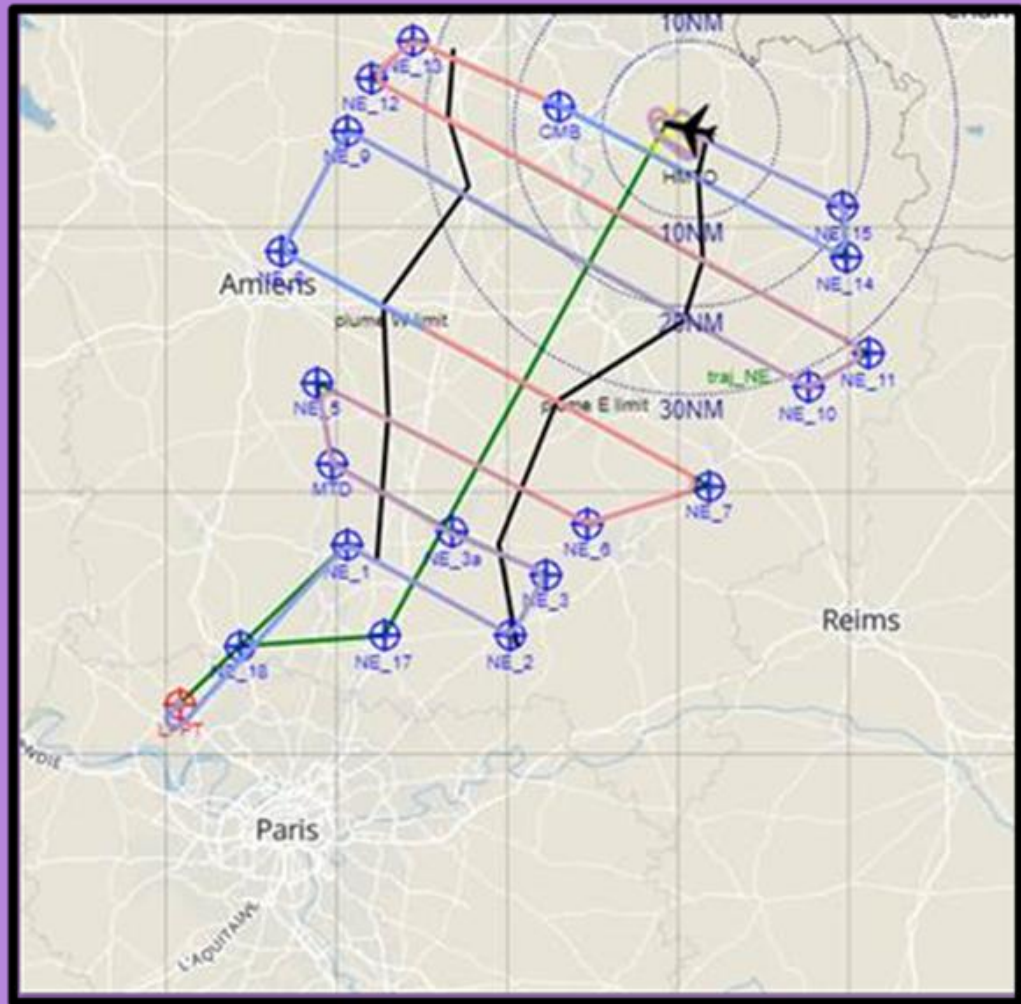
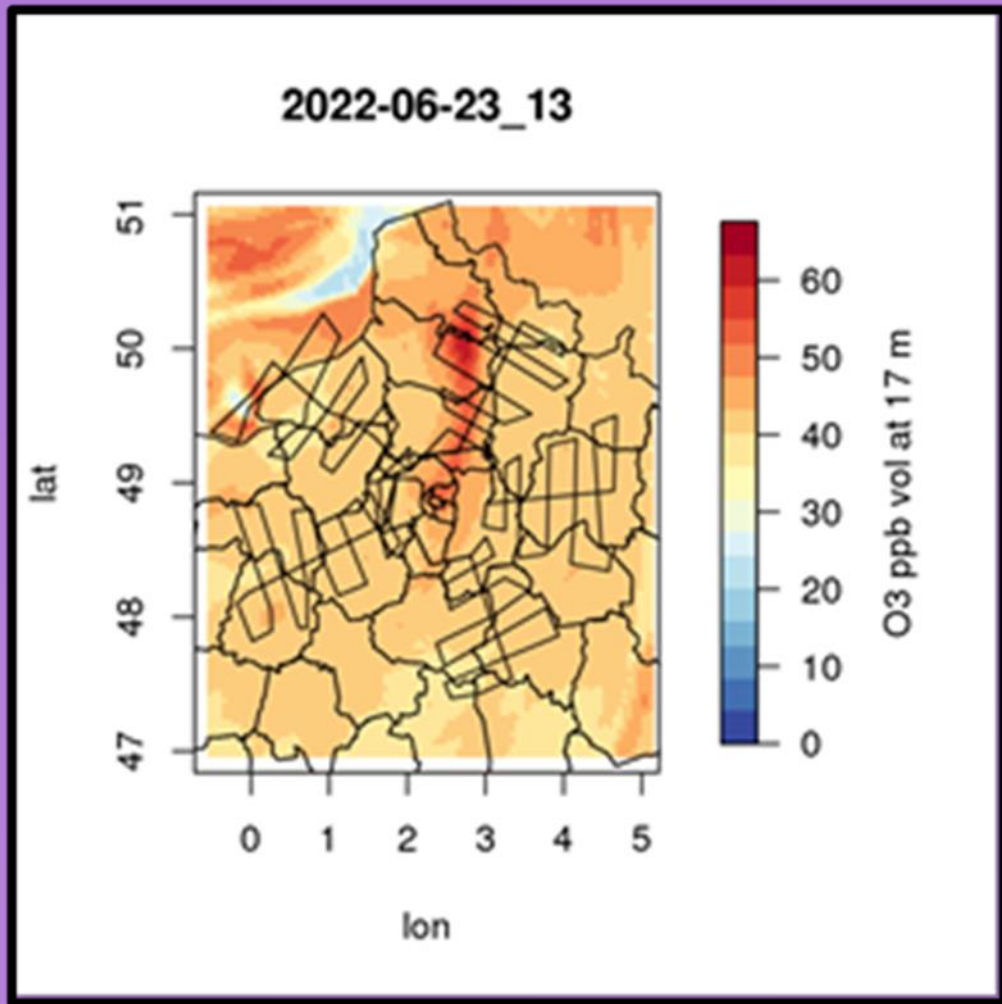


# ACROSS Aircraft Operations

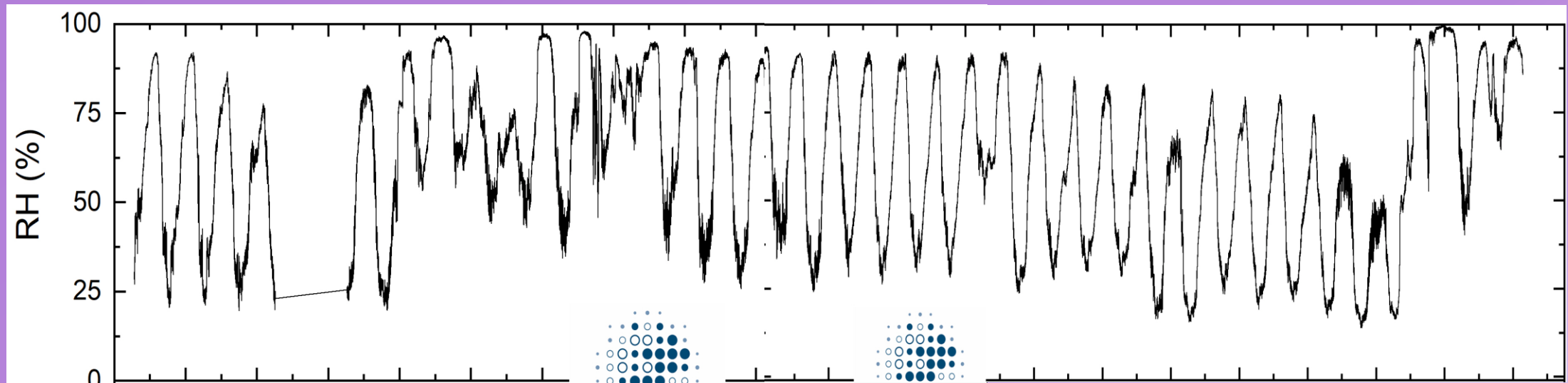
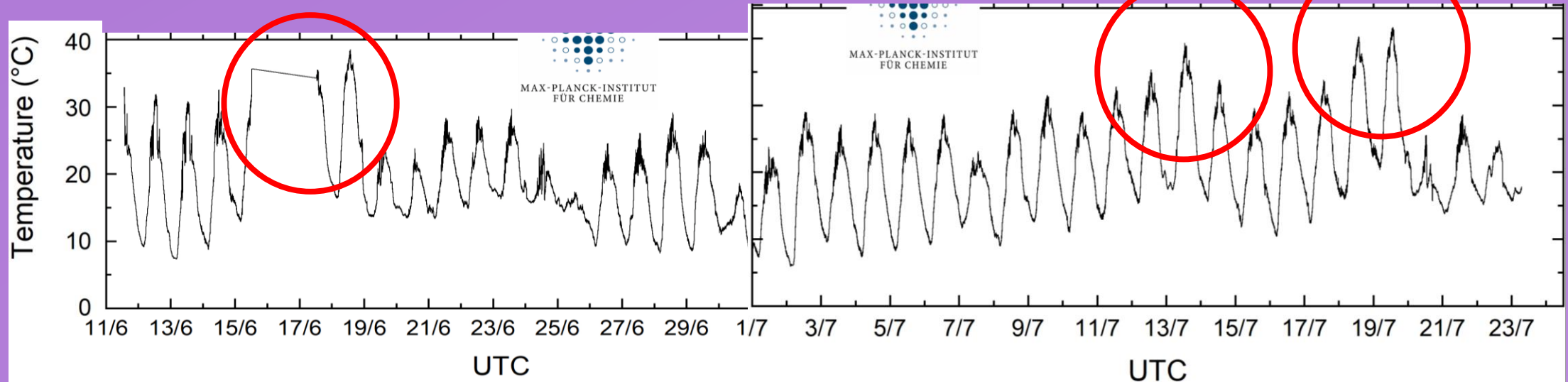


| ACROSS Flight # | SAFIRE Flight # | Date   | Take-off | Landing | Length | Pattern                            | Sounding |
|-----------------|-----------------|--------|----------|---------|--------|------------------------------------|----------|
|                 |                 | 14 Jun |          |         |        | Transit                            |          |
| --              | --              | 15 Jun |          |         |        | Instrument Maintenance             |          |
| 1               | 23              | 16 Jun | 13:00    | 14:30   | 1.67   | SW                                 | N        |
| 2               | 24              | 17 Jun | 14:00    | 16:10   | 2.33   | NE                                 | N        |
| 3               | 25              | 18 Jun | 13:00    | 16:30   | 3.67   | NW                                 | Y        |
| --              | --              | 19 Jun |          |         |        | Day Off                            |          |
| 4               | --              | 20 Jun | 14:30    | 15:30   | 1.17   | SW                                 | N        |
| 5               | 26              | 21 Jun | 14:40    | 18:10   | 3.67   | SW                                 | Y        |
| 6               | 27              | 22 Jun | 13:00    | 15:50   | 3.00   | SW                                 | N        |
| 7               | 28              | 23 Jun | 13:00    | 16:25   | 3.58   | NE                                 | Y        |
| --              | --              | 24 Jun |          |         |        | Cancelled - Instrument Maintenance |          |
| 8               | 29              | 25 Jun | 13:00    | 14:20   | 1.50   | NE                                 | N        |
| --              | --              | 26 Jun |          |         |        | Day Off                            |          |
| 9               | 30              | 27 Jun | 13:00    | 16:25   | 3.58   | E                                  | Y        |
| 10              | 31              | 28 Jun | 12:07    | 15:34   | 3.62   | NW                                 | Y        |
| 11              | 32              | 29 Jun | 13:02    | 16:33   | 3.68   | NE                                 | Y        |
| --              | --              | 30 Jun |          |         |        | Instrument Maintenance             |          |
| 12              | 33              | 1 Jul  | 13:05    | 16:31   | 3.60   | E                                  | Y        |
| 13              | 34              | 2 Jul  | 13:02    | 16:28   | 3.60   | NE                                 | Y        |
| --              | --              | 3 Jul  |          |         |        | Day Off                            |          |
| 14              | 35              | 4 Jul  | 13:01    | 16:29   | 3.63   | SE                                 | Y        |
| 15              | 36              | 5 Jul  | 12:59    | 16:18   | 3.48   | SE                                 | Y        |
| --              | --              | 6 Jul  |          |         |        | Pack                               |          |
|                 |                 | 7 Jul  |          |         |        | Transit                            |          |

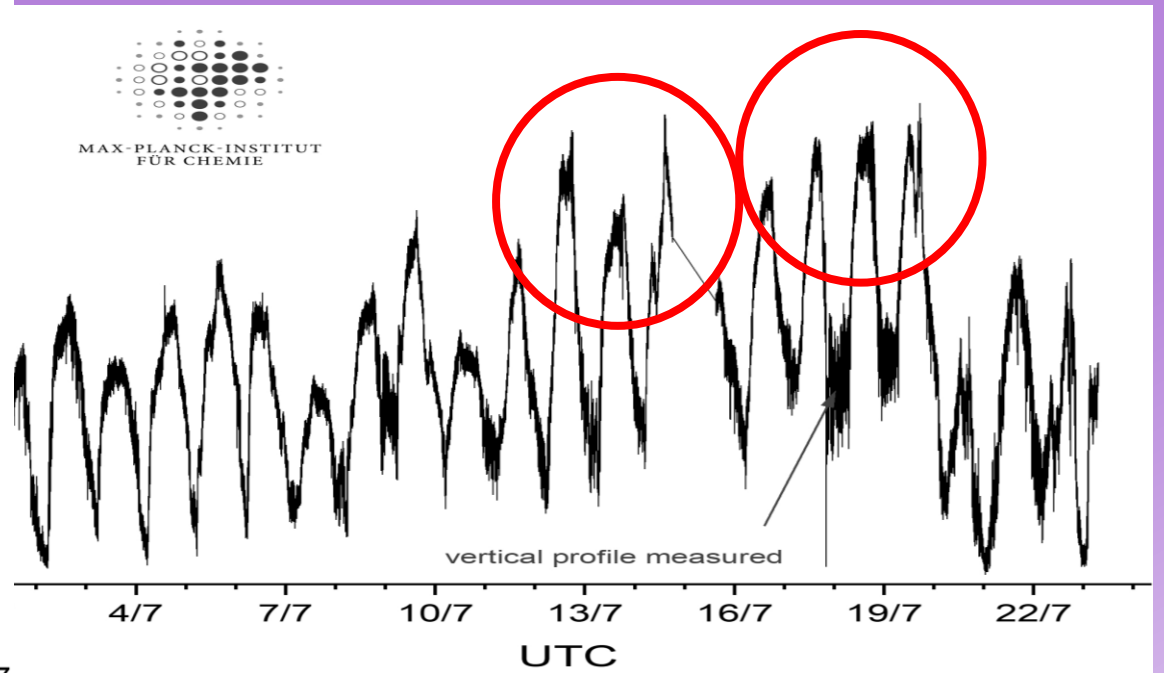
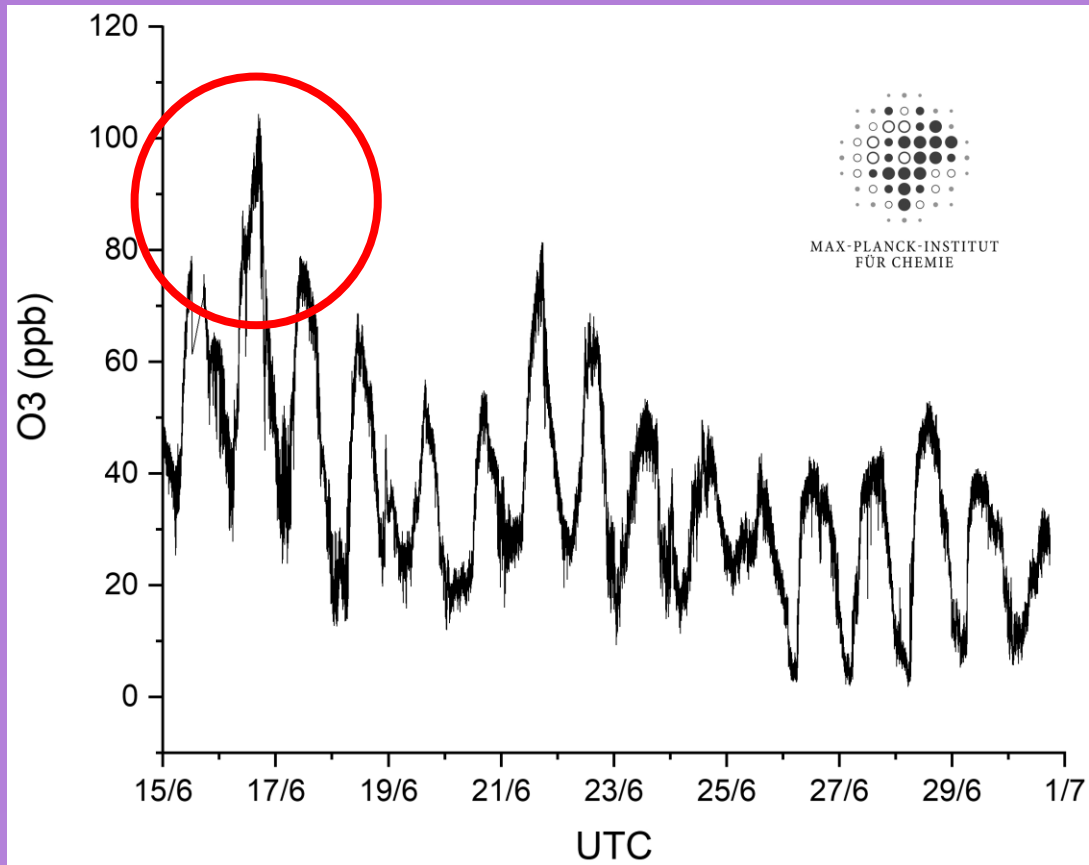
# ACROSS Flight #7 (S28)



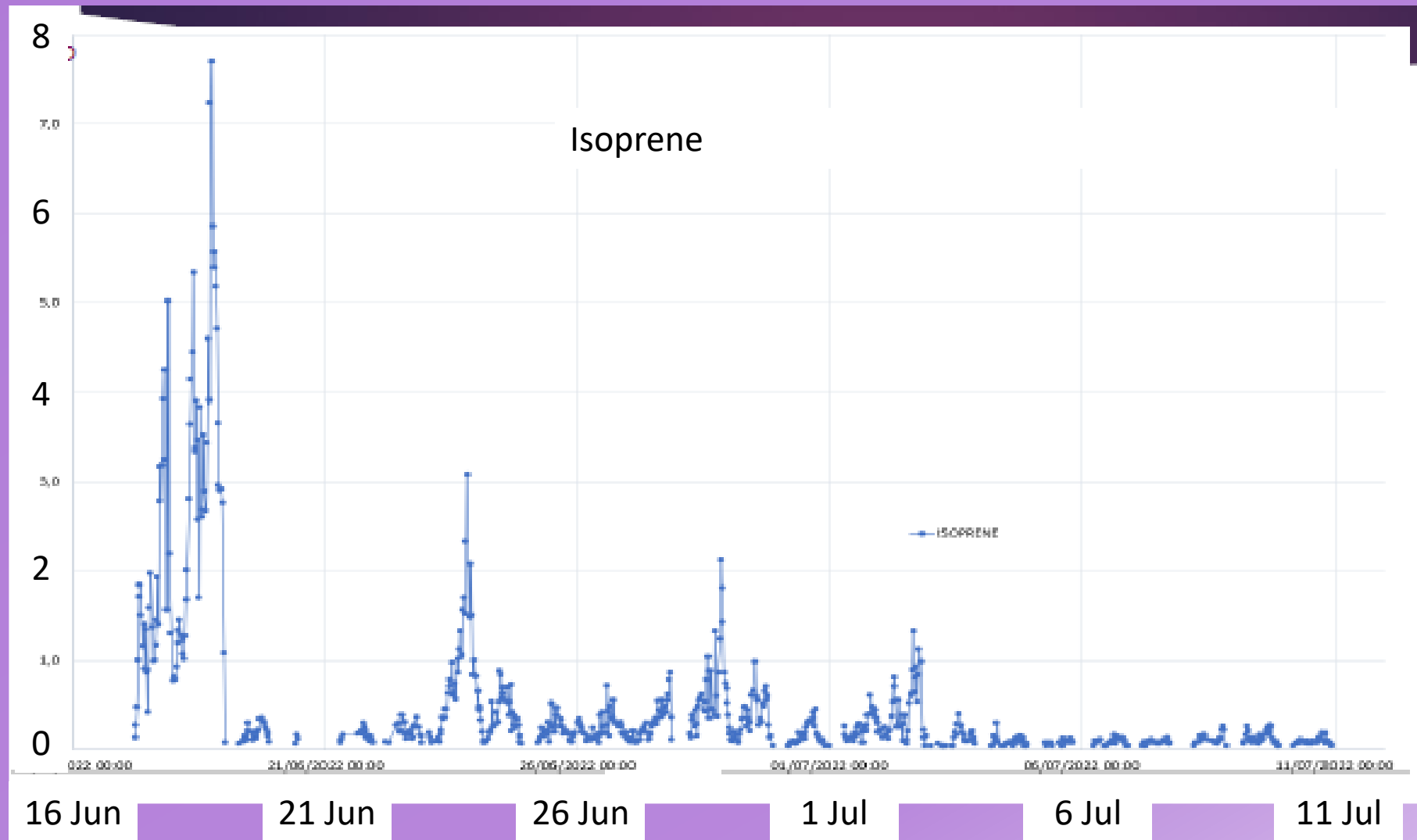
# Rambouillet Site Temperature & Humidity (MPI)



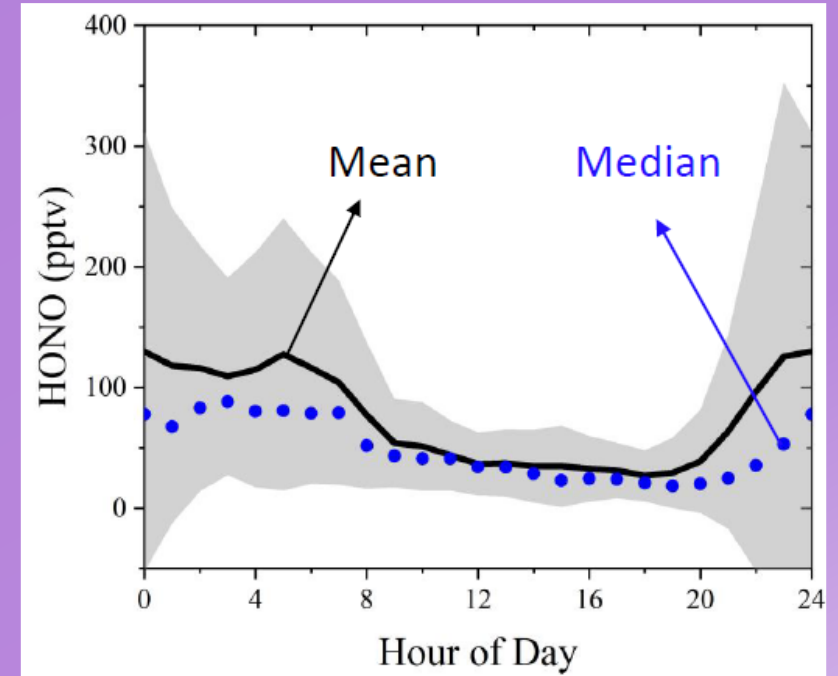
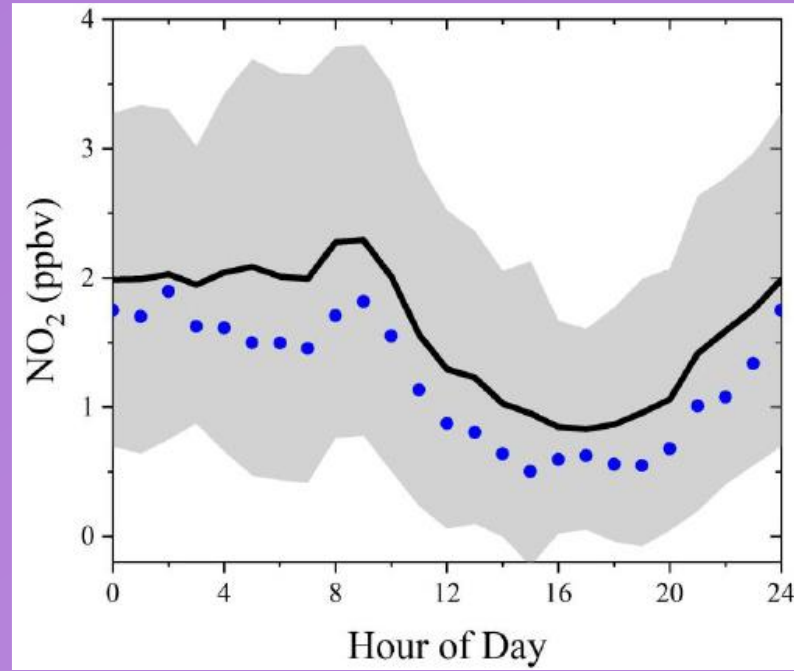
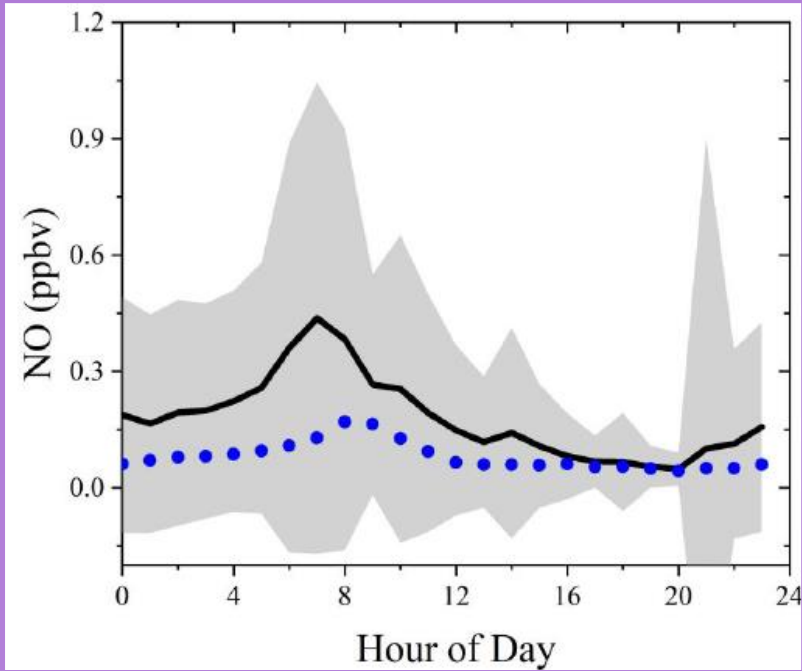
# Rambouillet Ground Level Ozone (MPI)



# Isoprene at SIRTA (LSCE)

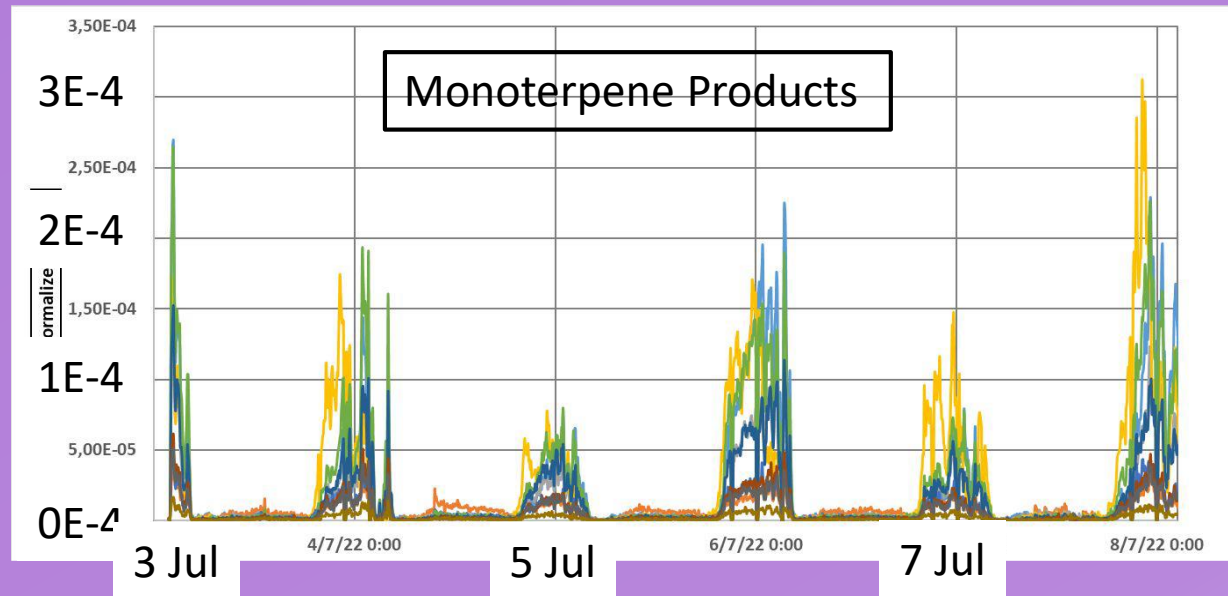
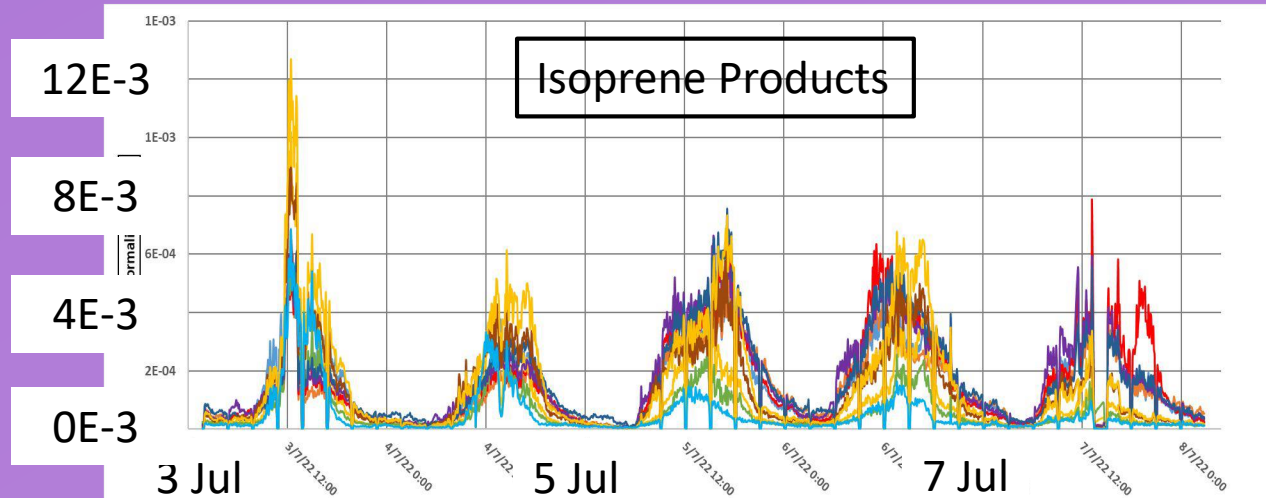


# NO, NO<sub>2</sub> and HONO (ICARE & LPC2E)

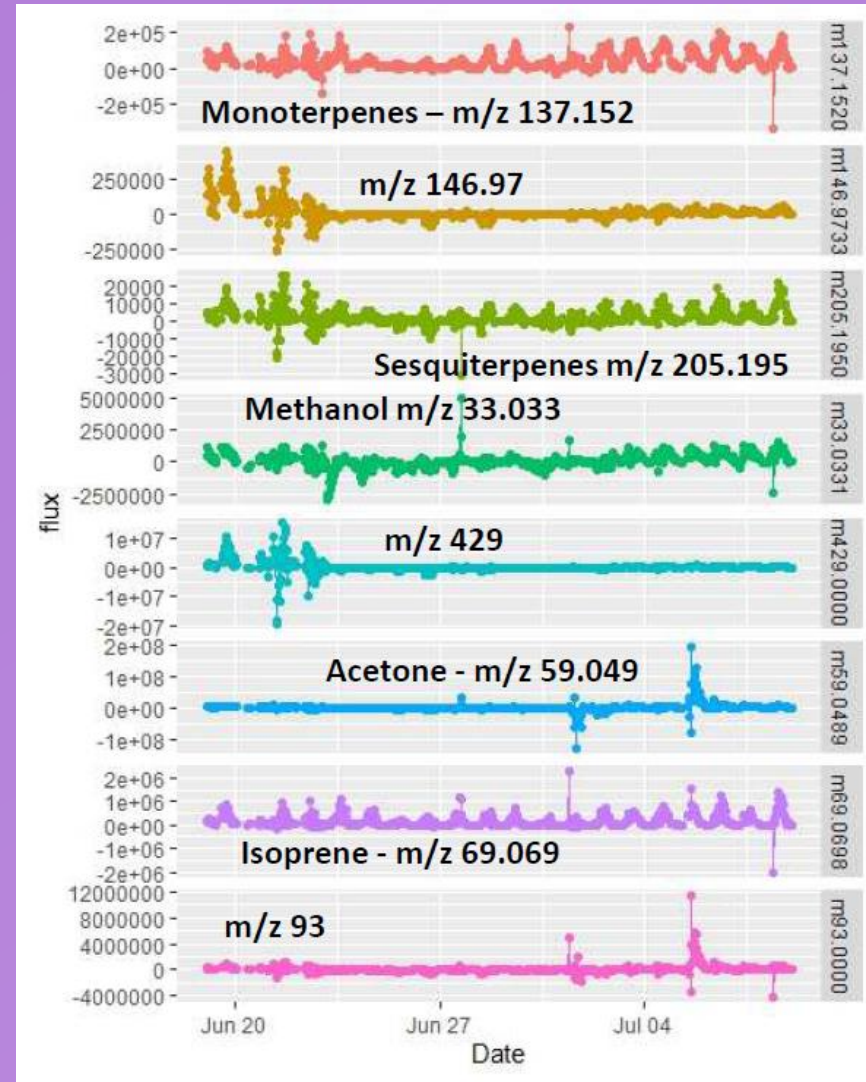
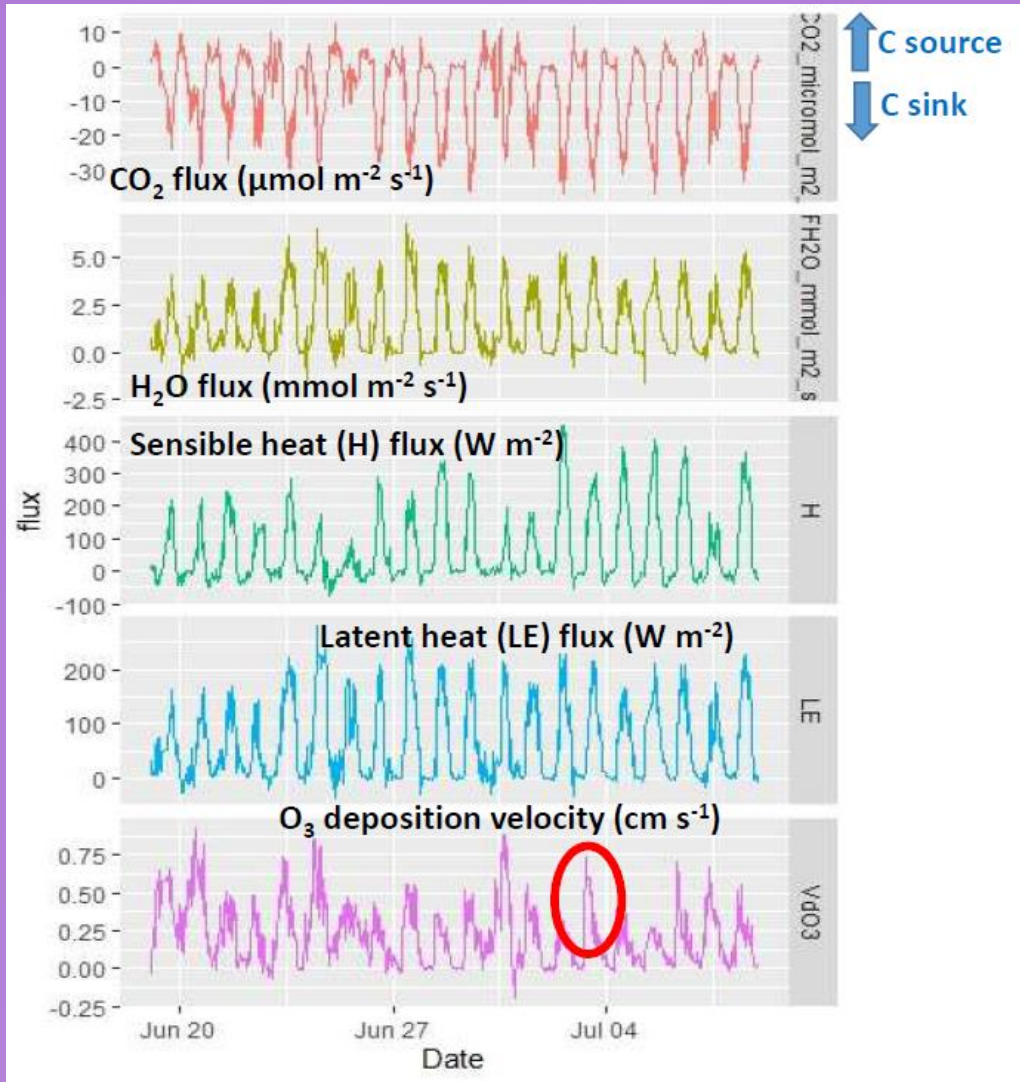




# Nitrate ToF-CIMS OVOC Measurements

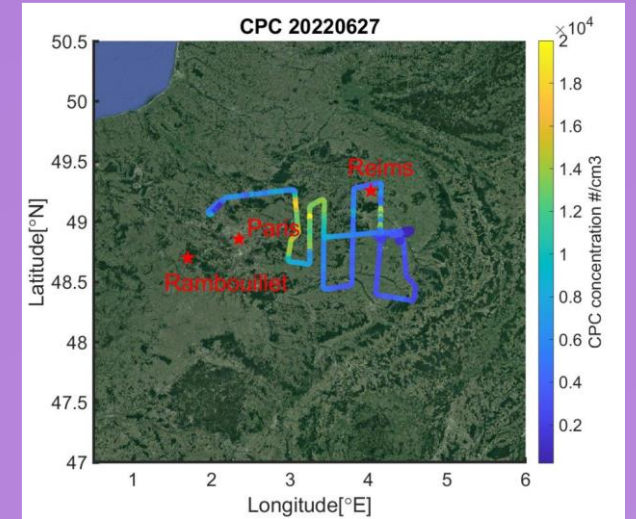
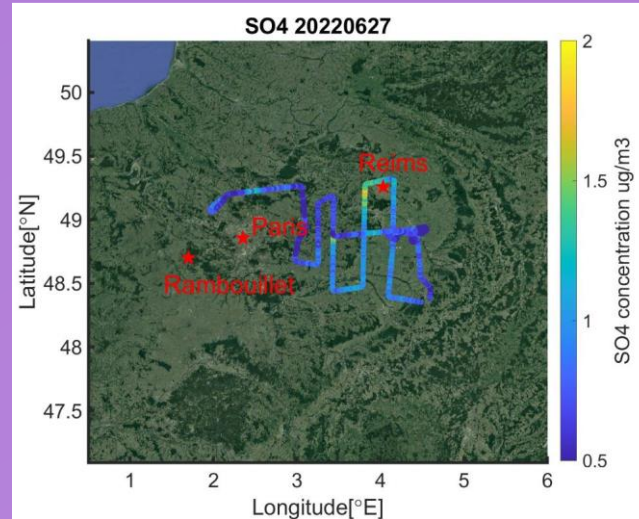
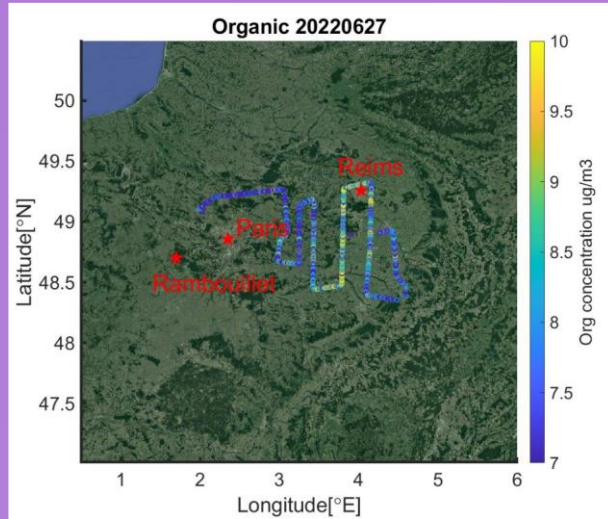


# Species and Heat Fluxes (INRAE, AgroParisTech, Saclay)

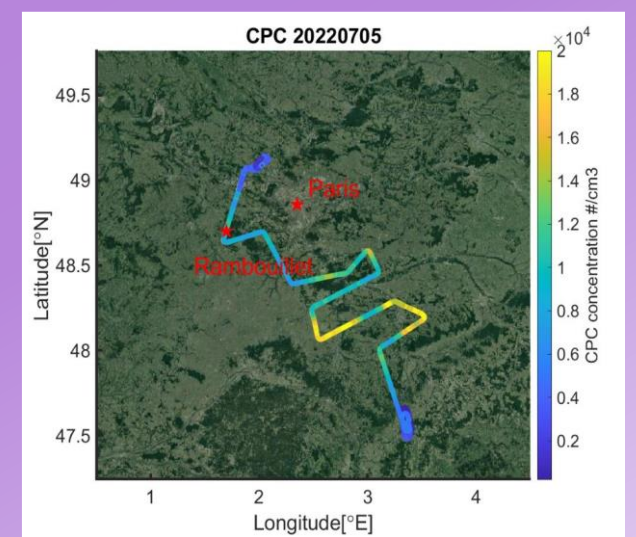
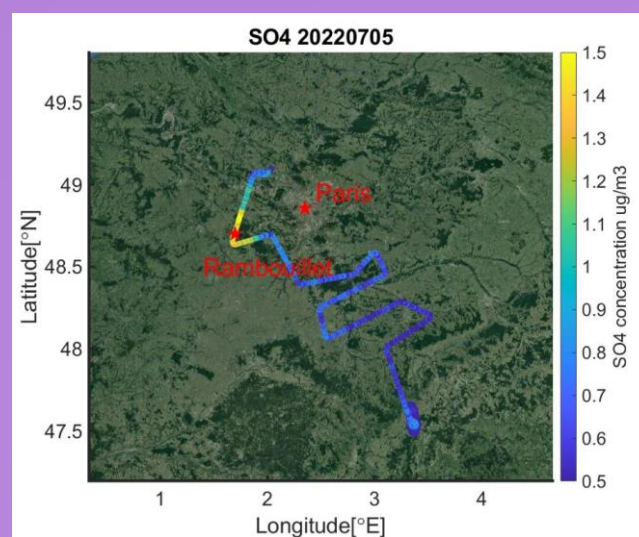
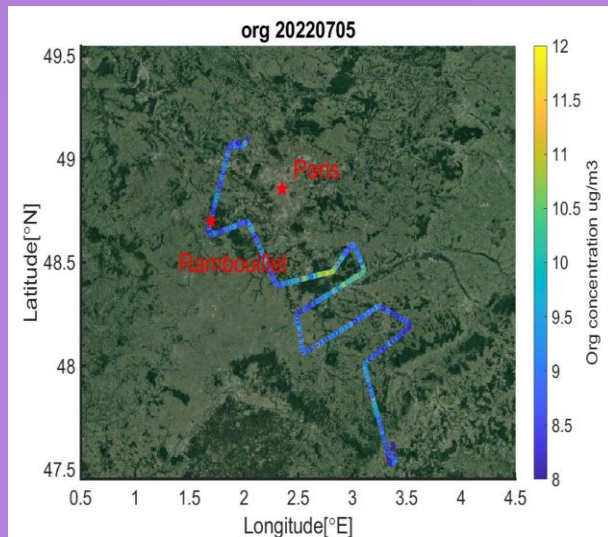


# Aerosol Composition (LISA, JHU)

Flight #9  
27 June 2022

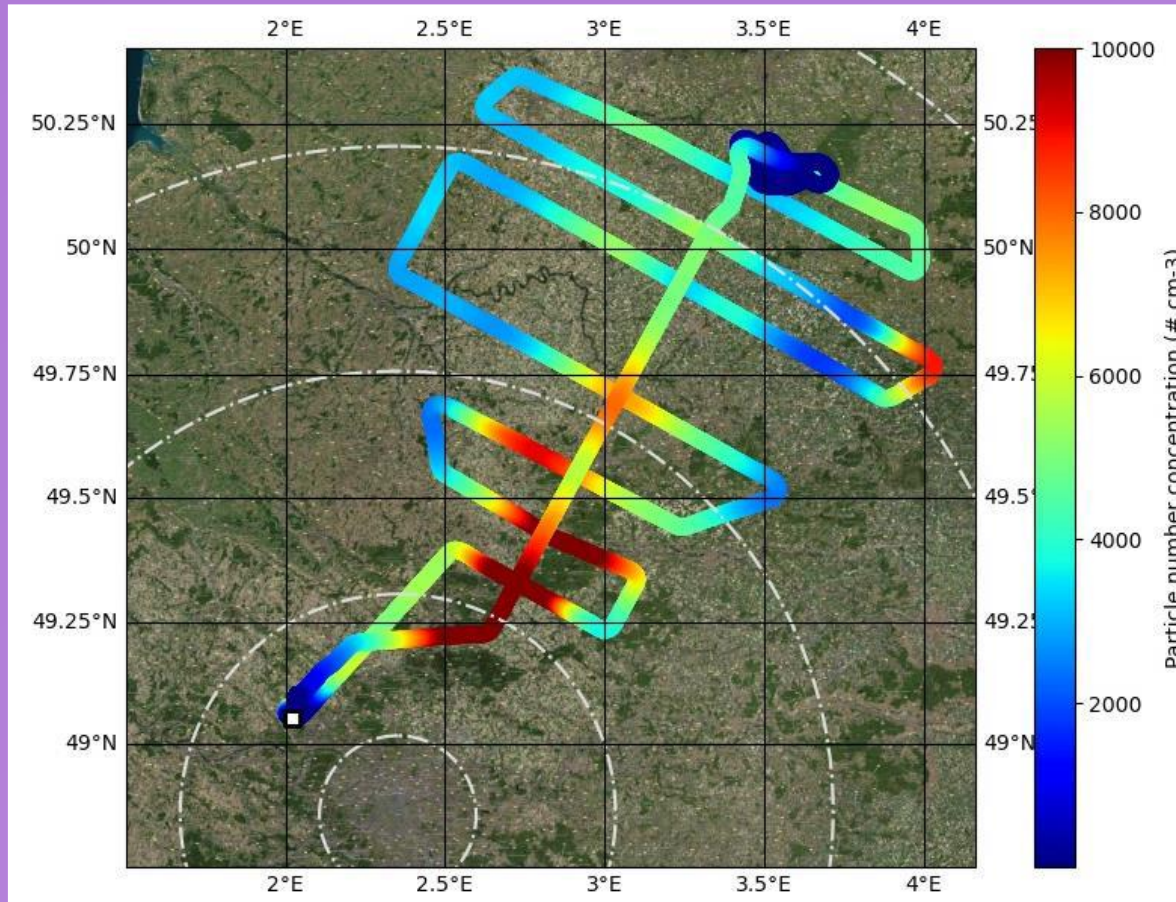


Flight #15  
5 July 2022

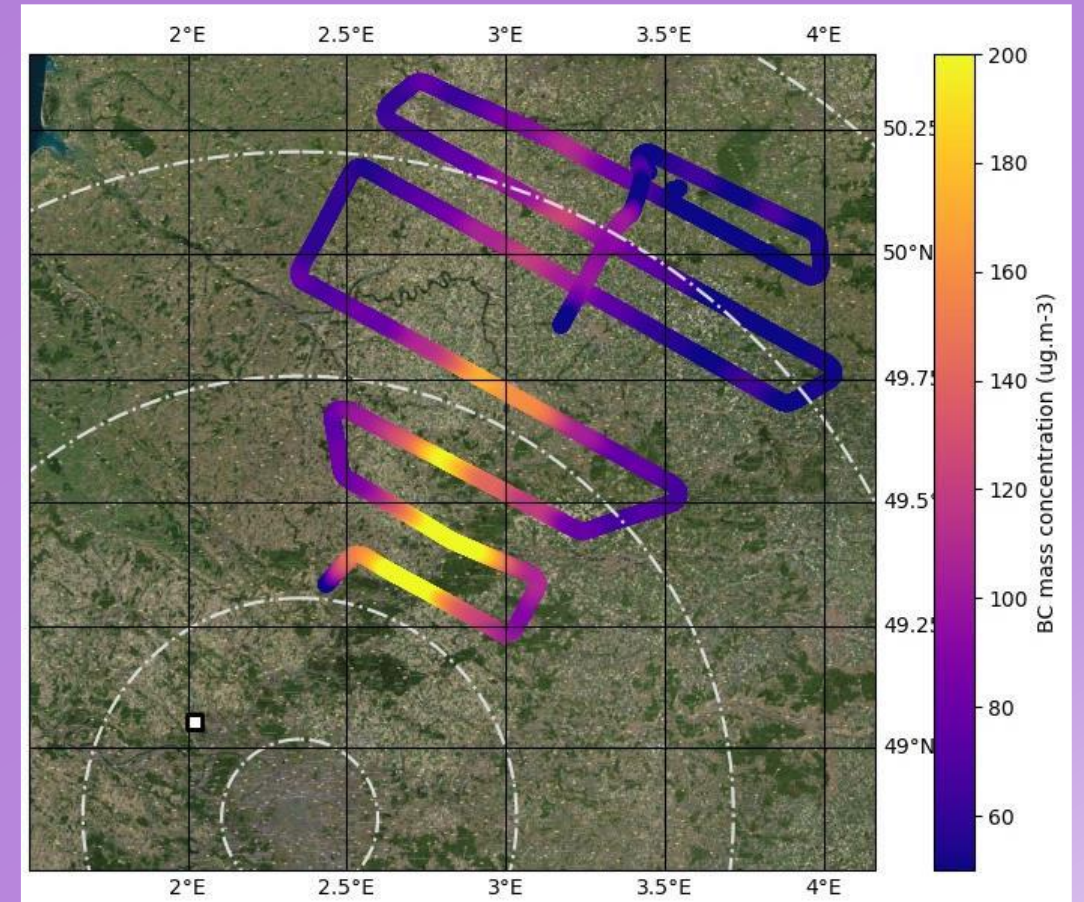


# Flight #7 (S28) Particle Number & BC Mass (CNRM)

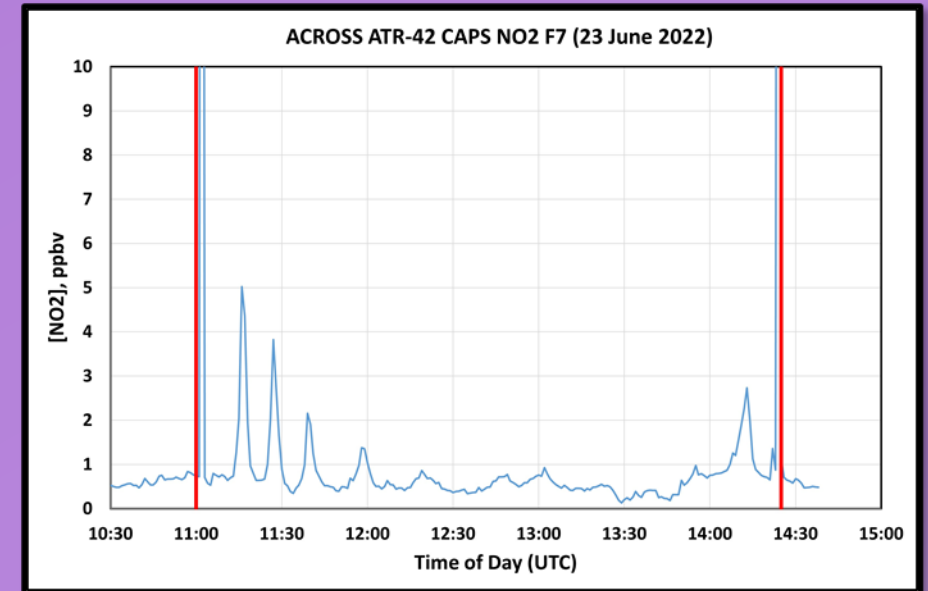
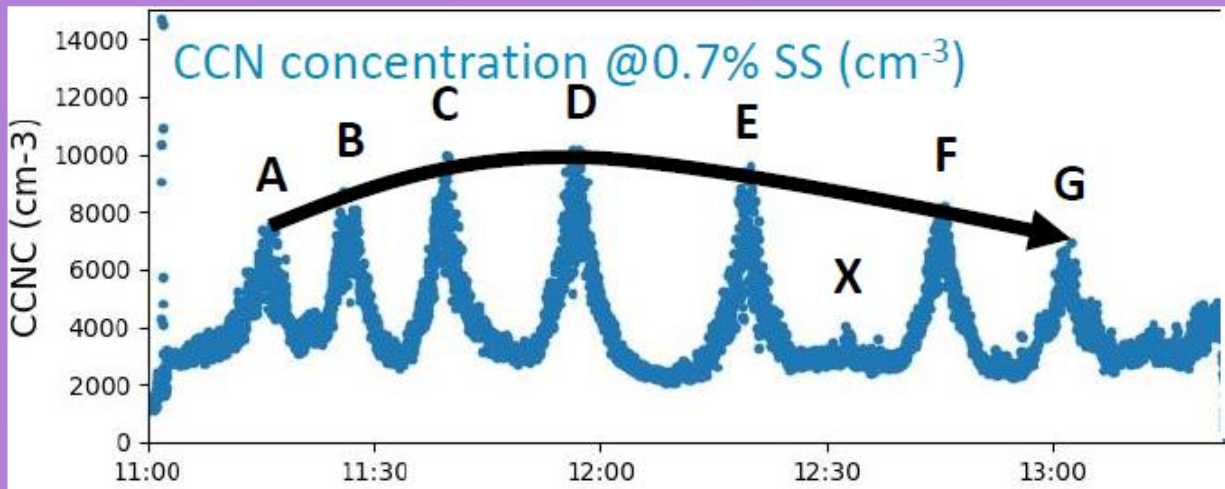
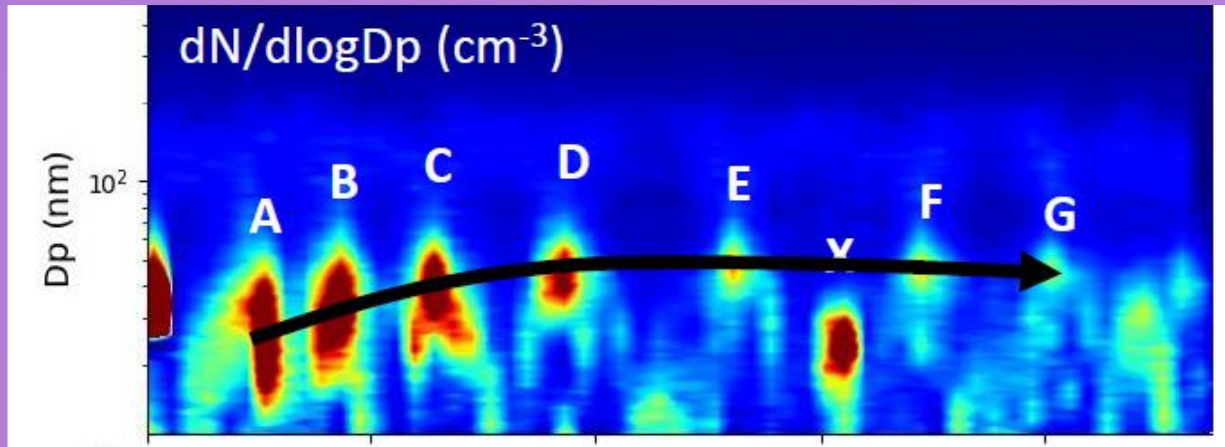
Particle Number Concentration (11-478 nm)



Black Carbon Mass Concentration



# Flight #7 (S28) Particle (CNRM) & NO<sub>2</sub> Evolution



# ACROSS Project

- Thanks to all who planned and participated in ACROSS
- Valuable dataset will become available in the next few months
- Next steps
  - Data workup and submittal to archive
  - Data discussion workshops
  - Meeting presentations
  - Scientific Publications